



## KONTEC KSC-F

**Highly efficient single-acting  
vise especially for pallet  
automation**

# Highly efficient all-rounder with quick lever clamping for machining raw and finished parts

SCHUNK KONTEC KSC-F single-acting vise with fixed jaw is especially suitable for use in automated machine loading. They score with a quick adjustment of the clamping range, flat design, and low weight. These are the perfect conditions for the use in pallet storage units. The sizes KSC-F 80, KSC-F 125 and KSC-F 160 are particularly designed for the common pallet sizes 320 x 320 mm, 400 x 400 mm, and 500 x 500 mm. It achieves high clamping forces even at a comparably low torque. Thanks to the interface for quick-change pallet systems, the single-acting vise can be optimally combined with the large NSE3 and GFD modular system to greatly reduce set-up times on machine tools.



## Advantages – Your benefits

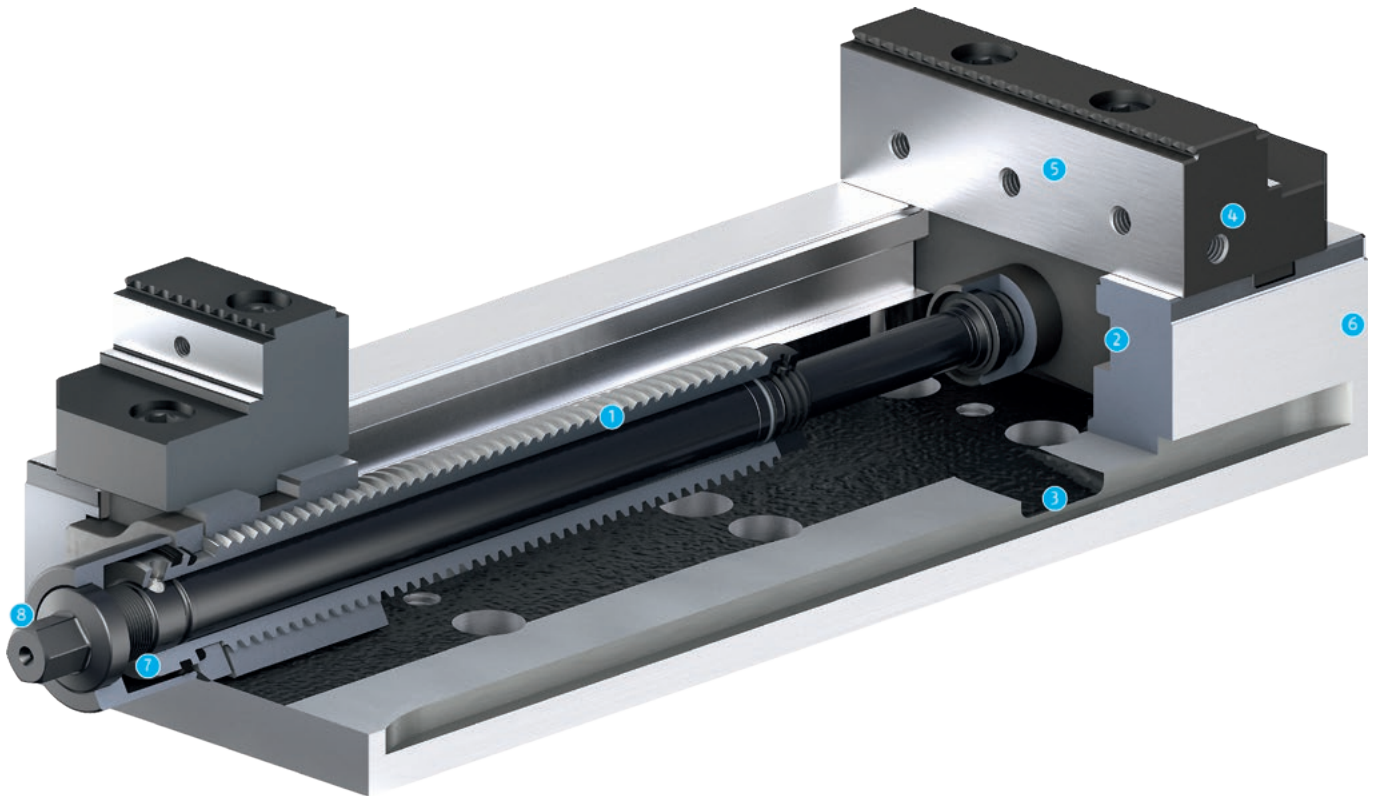
- + Extremely flat design**  
For maximum utilization of the machine room
- + Quick clamping via torque wrench**  
Simple, fast, and reliable workpiece clamping
- + High clamping forces**  
Ensure process reliability during machining
- + Large clamping range**  
High level of flexibility
- + Lateral drainage slots**  
For drainage of coolant and chips
- + Wide range of applications**  
Suitable for rough and finished parts machining
- + Wide jaw program**  
Optimal adaptation to new clamping tasks
- + Optimum jaw support for O.D. and I.D. clamping due to a very long base jaw guidance**  
Allows high clamping forces at a long service life
- + Clamping by tension – prevents the base body from bending**  
Maximum machining precision
- + Integrated NSE3 and GFD interface**  
Minimization of set-up times. Can be flexibly combined with the large modular quick-change pallet system

## Technical data

Description	Quick lever clamping	Interface of the quick-change pallet system	Width of the clamping vise	Vise length	Max. clamping force
			[mm]	[mm]	[kN]
KSC-F 80-214	●	●	80	214	25
KSC-F 125-362	●	●	125	362	40
KSC-F 125-740	●	●	125	740	40
KSC-F 160-480	●	●	160	480	50

## Function KSC-F

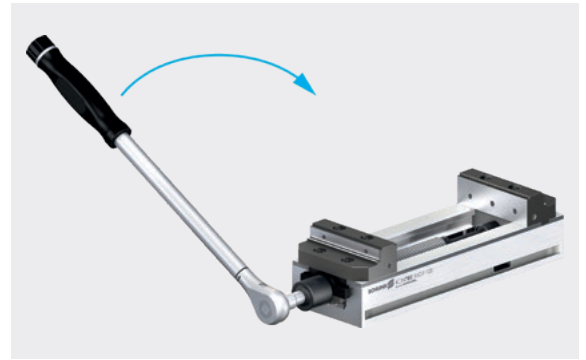
SCHUNK KONTEC KSC-F single-acting clamping vises are manual direct clamping vises. The drive takes place via a spindle. Force generation is carried out with a force transmission (spindle in the spindle) and is linearly. The movable jaw is moved by turning the spindle in direction of the fixed jaw. The clamping force depends on the torque. The clamping range depends on the used jaw range.



- 1 Spindle drive**  
For the highest of clamping forces
- 2 Long jaw guidance**  
Offers optimal support for O.D.- and I.D. clamping
- 3 Drainage slots**  
For coolant and chips
- 4 Mounting thread**  
For workpiece stops
- 5 Standard jaw interface**  
For the use of standard top jaws from SCHUNK
- 6 Low height design**  
Expands your machine's workspace
- 7 Mechanical force transmission**  
For self-locking and vibration-resistant clamping
- 8 Actuation via hexagon connection**  
This ensures easy operation

## Quick clamping

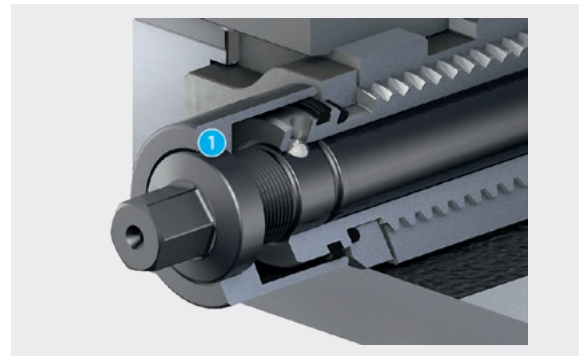
Due to 160° quick clamping, workpieces are clamped in under a second and the vise reliably locked. An additional retightening of the torque wrench or an additional angle drive is no longer required.



## Force actuation via fine thread

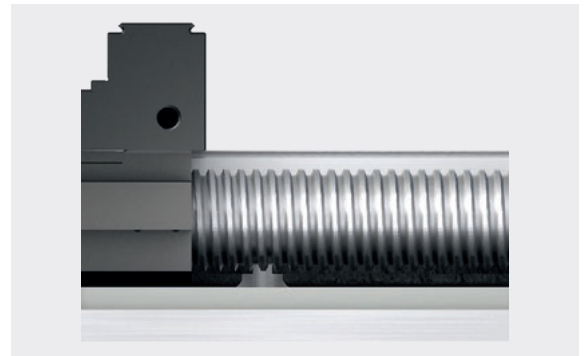
A rough quick adjustment of the clamping range is carried out via the main spindle. In the event of workpiece contact, the main spindle is uncoupled via a ball mechanism and the force transmission is initialized via a fine thread. This is how the KSC-F achieves high clamping forces even at a comparably low torque.

### 1 Fine thread



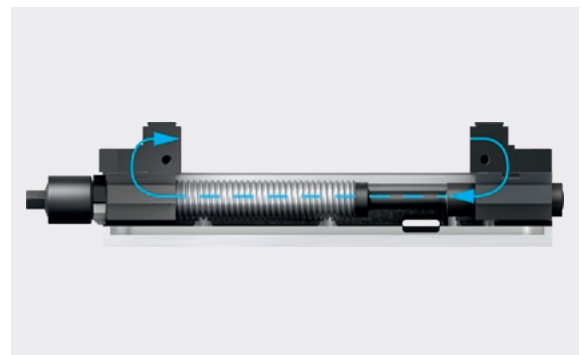
## Quick-adjustment of the clamping range

Due to the large spindle pitch, the jaw stroke can be passed through with a minimum of turns. In order to accelerate this process in addition, a crank can be used.



## Clamping by tension

The spindle is subjected to tensile force during the clamping process. The closed force system prevents the base body from bending. This makes the KSC-F ideal for the use with quick-change pallet systems.



### Threads for stops in the base jaws

The lateral threads in the clamping jaws allow a quick and easy attachment of workpiece-specific stops.

1 Thread for stops



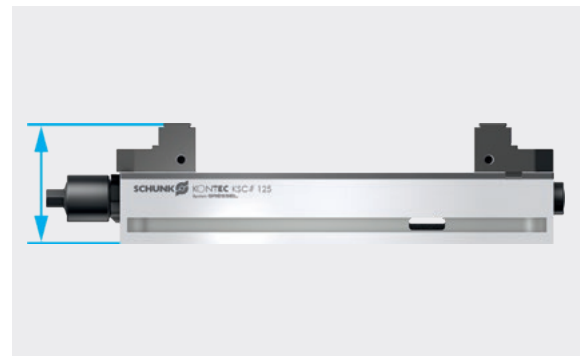
### Clamping jaws with a very large clamping range

With the reversible grip jaws, a very large clamping range can be covered thanks to simple turning over. This benefit particularly pays off as it allows smaller and therefore lighter vises to be used.



### Extremely flat design

Due to the extremely flat design, the KSC-F takes up only a small amount of space in the machine. The largest part of the machine room is available for the workpiece and for machining.

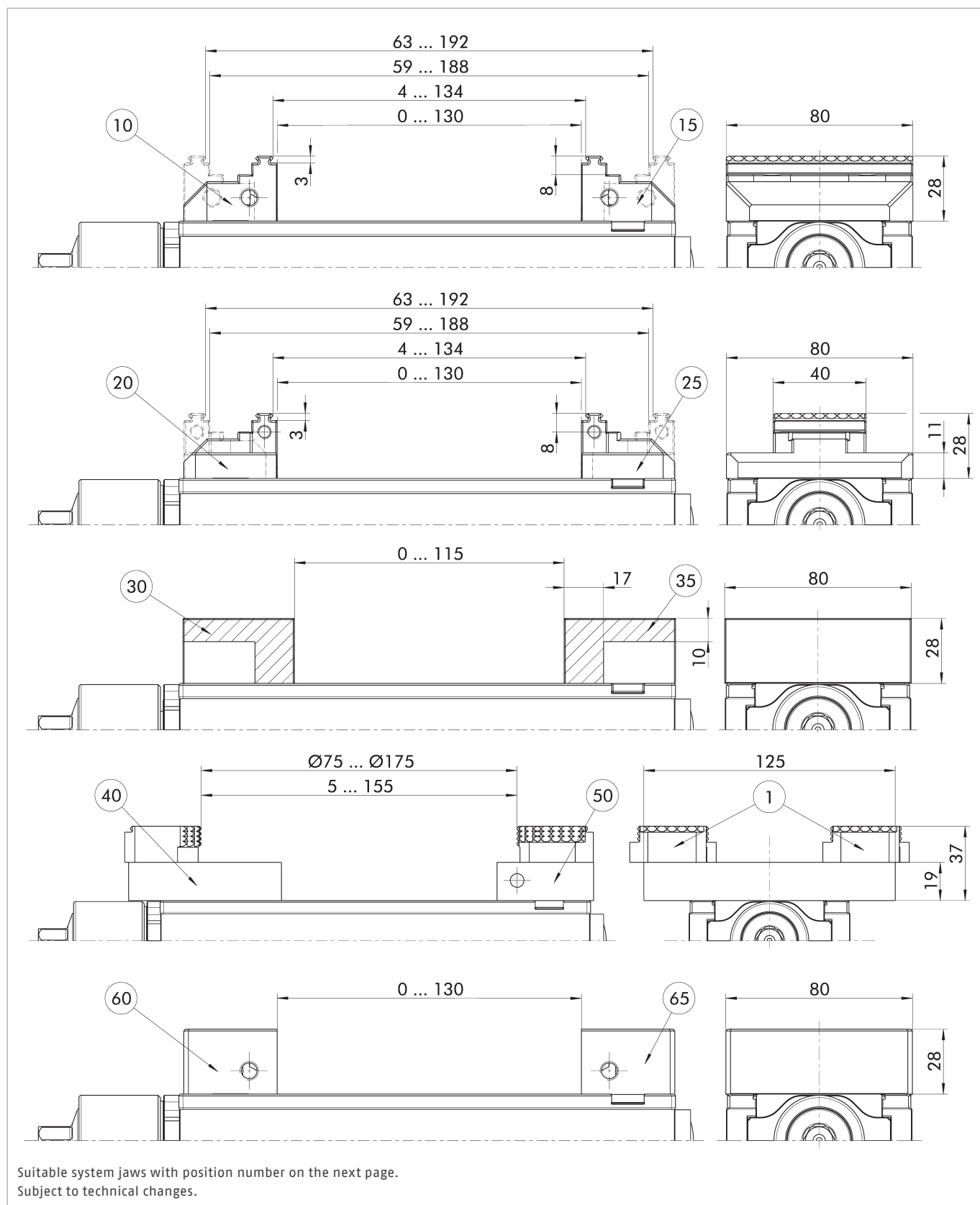


### Mounting options

The KSC-F offers multiple integrated options for mounting on the machine table.. The fixed-jaw vise can be mounted on the NSE3 or GFD quick-change pallet modules via the preconfigured interface for quick-change pallet systems to minimize set-up times. Alternatively, the vise can be mounted with screws or clamping claws.

- 1 Mounting via quick-change pallet system
- 2 Mounting via clamping claws
- 3 Mounting via screws





① 6-way reversal jaw grip (ID 0430803), 6-way reversal jaw carbide grip (ID 1395550)

Technical data

Description	ID	Max. clamping force [kN]	Max. torque [Nm]	Weight [kg]
KSC-F 80-214	0432729	25	50	5

Scope of delivery

Vise, operating manual; without system jaws

Notes

System jaws

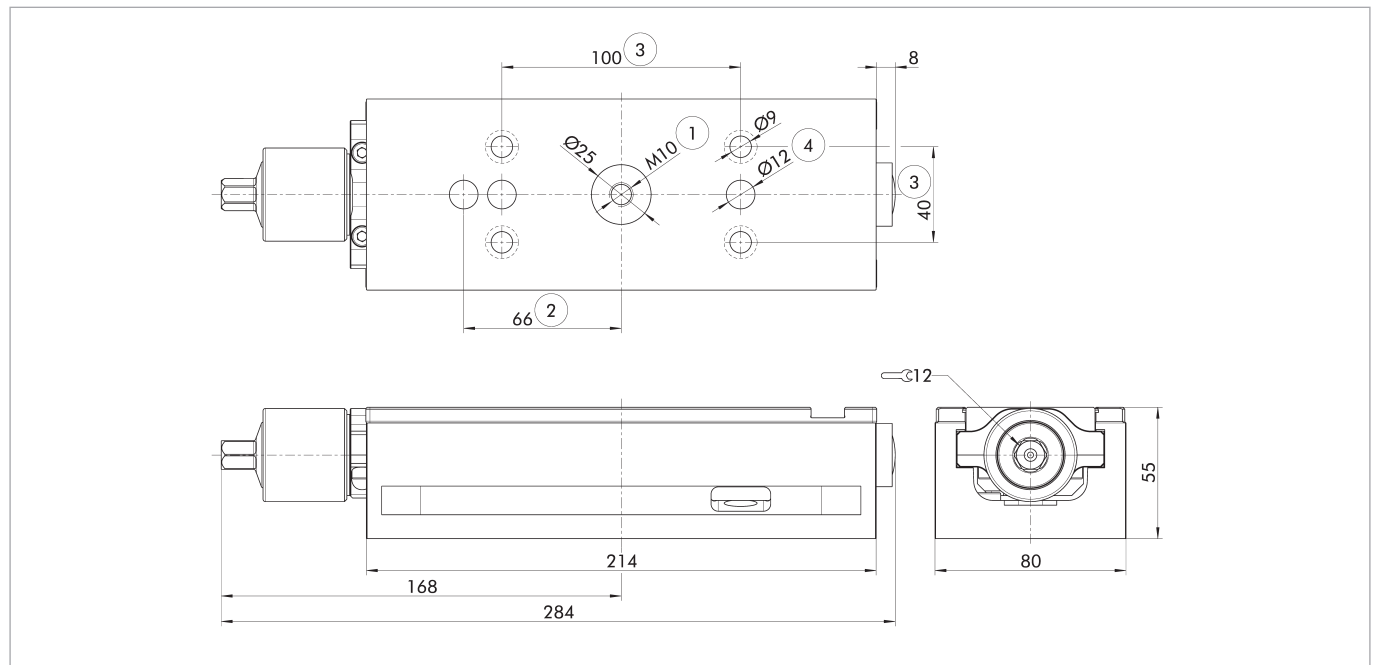
The clamping device and the system jaws have to be put together separately for this version.

Use of VERO-S

When using VERO-S, care must be taken to ensure that a shortened screw is used in the clamping pin as well as a shortened indexing pin is used (see accessories).

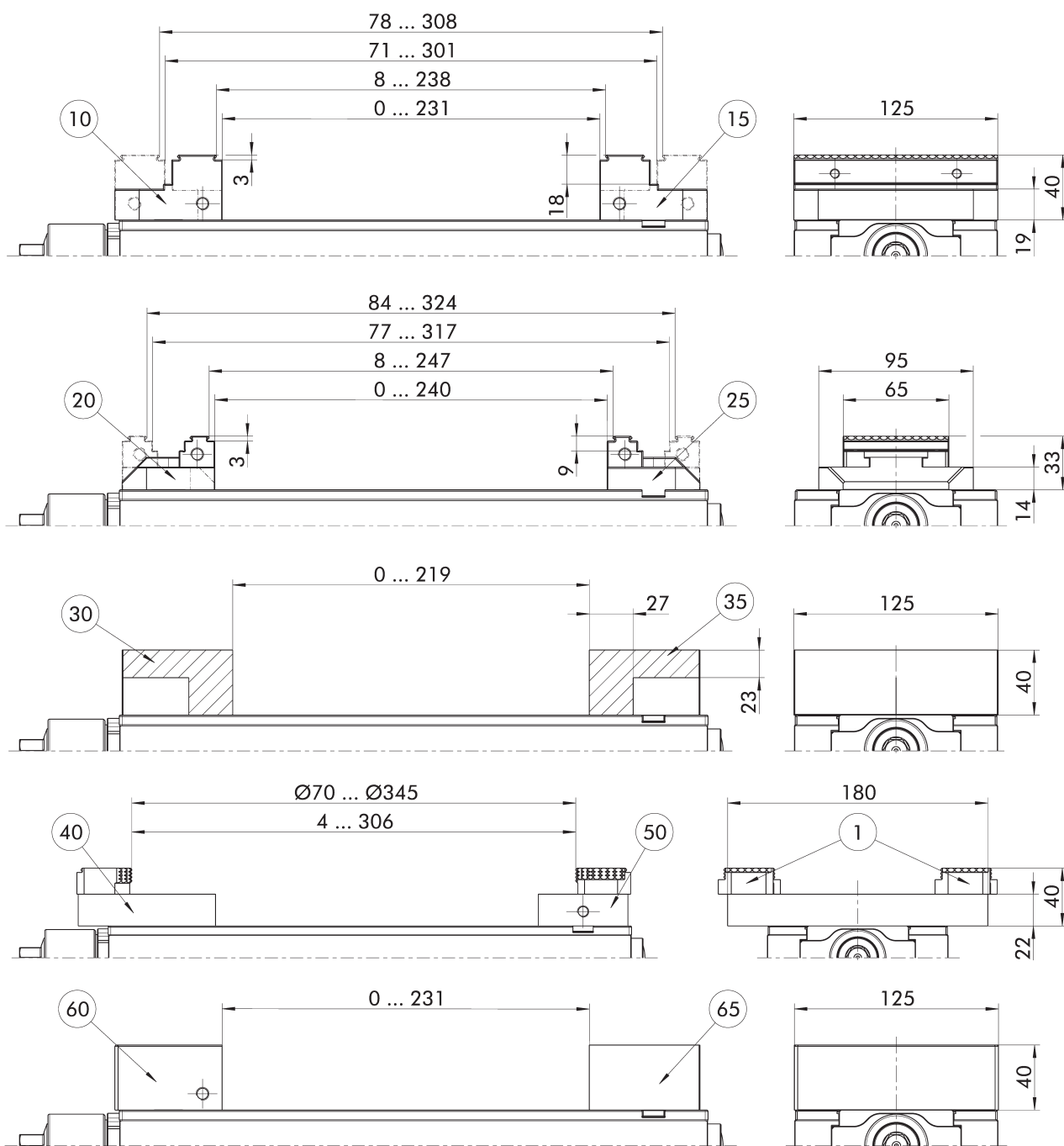
Suitable system jaws

Description	Item	Description	ID	Width [mm]	Depth [mm]	Height [mm]	Weight [kg]
Reversible grip jaw	10	SGWB-G3-B 80-40.3-28	0432715	80	40.3	28	0.5
Reversible grip jaw	15	SGWB-G3-F 80-40.3-28	0432732	80	40.3	28	0.5
Reversible grip jaw	20	SGWB-G3-B 40-40.3-28	1514379	40	40.3	28	0.4
Reversible grip jaw	25	SGWB-G3-F 40-40.5-28	1587365	40	40.5	28	0.4
Alu jaw	30	SGAL-B 80-48-28	0432718	80	48	28	0.4
Alu jaw	35	SGAL-F 80-48-28	0432733	80	48	28	0.4
Swivel plate	40	SGP-3 125-76-19	0432720	125	76	19	1.3
Adapter plate	50	SGA-4 125-48-19	0432735	125	48	19	0.8
Monoblock jaw	60	SGBB-B 80-40-28	1349856	80	40	28	0.7
Monoblock jaw	65	SGBB-F 80-40-28	1349855	80	40	28	0.7



- ① Prepared for NSE3 and GFD clamping pins
- ② Prepared for indexing pin IXB V1-K

- ③ Prepared for M8 screws
- ④ Prepared for indexing pin GFD-IXB



Suitable system jaws with position number on the next page.  
Subject to technical changes.

- ① 6-way reversal jaw grip (ID 0430803), 6-way reversal jaw carbide grip (ID 1395550)



**Technical data**

Description	ID	Max. clamping force [kN]	Max. torque [Nm]	Weight [kg]
KSC-F 125-362	0432488	40	90	15

**Scope of delivery**

Vise, operating manual; without system jaws

**Notes**

**System jaws**

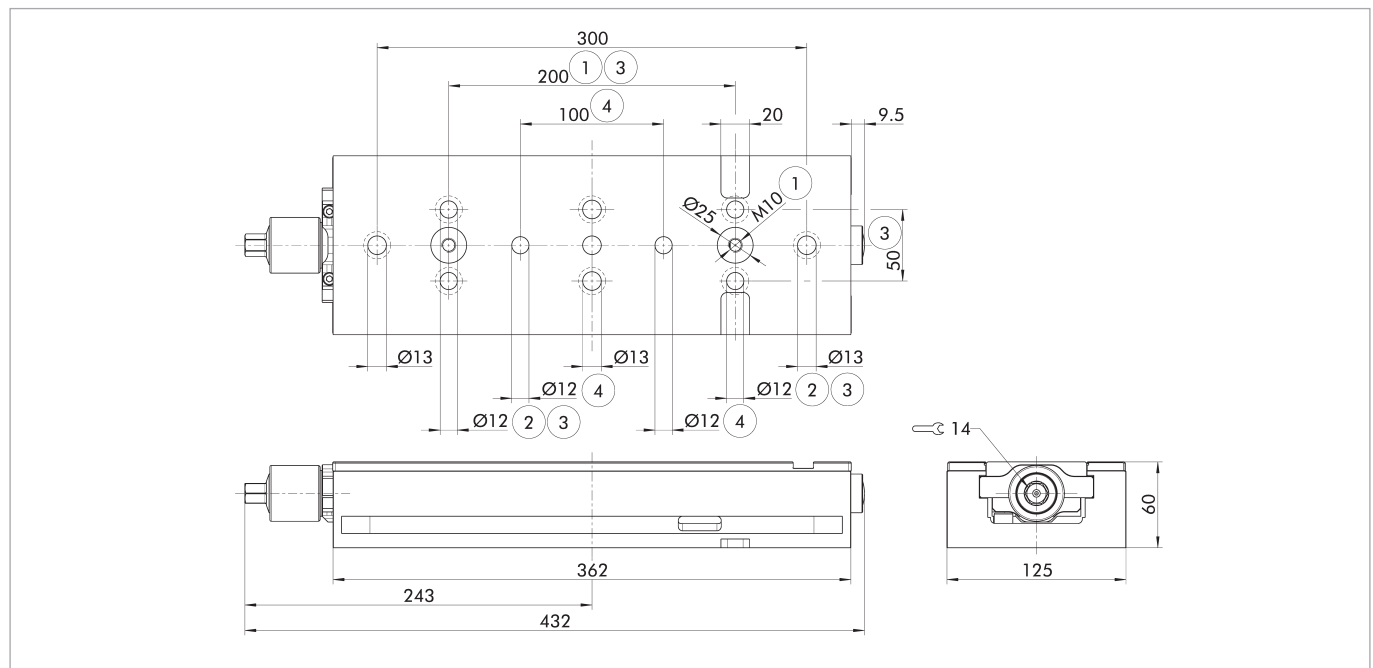
The clamping device and the system jaws have to be put together separately for this version.

**Use of VERO-S**

When using VERO-S, care must be taken to ensure that a shortened screw is used in the clamping pin (see accessories).

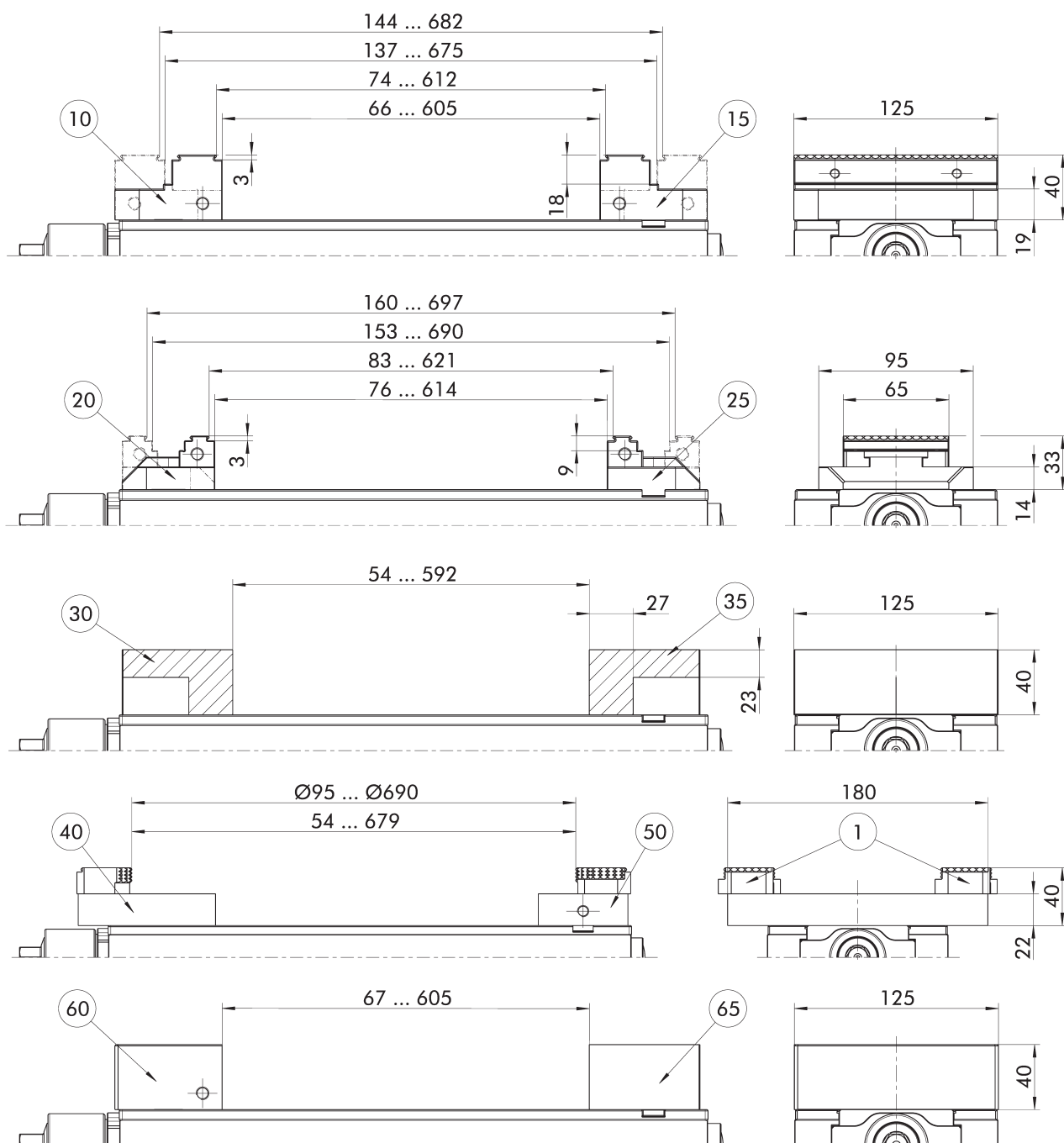
**Suitable system jaws**

Description	Item	Description	ID	Width [mm]	Depth [mm]	Height [mm]	Weight [kg]
Reversible grip jaw	10	SGWB-G3-B 125-66-40	0432490	125	66	40	1.8
Reversible grip jaw	15	SGWB-G3-F 125-66-40	0432489	125	66	40	1.8
Reversible grip jaw	20	SGWB-G3-B 65-57-33	1514380	65	57	33	0.9
Reversible grip jaw	25	SGWB-G3-F 65-57-30	1587366	65	57	30	0.9
Alu jaw	30	SGAL-B 125-68-40	0432469	125	68	40	1
Alu jaw	35	SGAL-F 125-68-40	0432492	125	68	40	1.1
Swivel plate	40	SGP-3 180-95-22	0432470	180	95	22	2.8
Adapter plate	50	SGA-4 180-62-22	0432493	180	62	22	1.9
Monoblock jaw	60	SGBB-B 125-66-40	1349858	125	66	40	2.6
Monoblock jaw	65	SGBB-F 125-66-40	1349857	125	66	40	2.6



- ① Prepared for NSE3 and GFD clamping pins
- ② Prepared for fitting screws M12

- ③ Grid dimension prepared for screws M12 and fitting screws M12
- ④ Prepared for dowel pin set Ø 12m6



Suitable system jaws with position number on the next page.  
Subject to technical changes.

- ① 6-way reversal jaw grip (ID 0430803), 6-way reversal jaw carbide grip (ID 1395550)

**Technical data**

Description	ID	Max. clamping force [kN]	Max. torque [Nm]	Weight [kg]
KSC-F 125-740	1440492	40	90	30

**Scope of delivery**

Vise, operating manual; without system jaws

**Notes**

**System jaws**

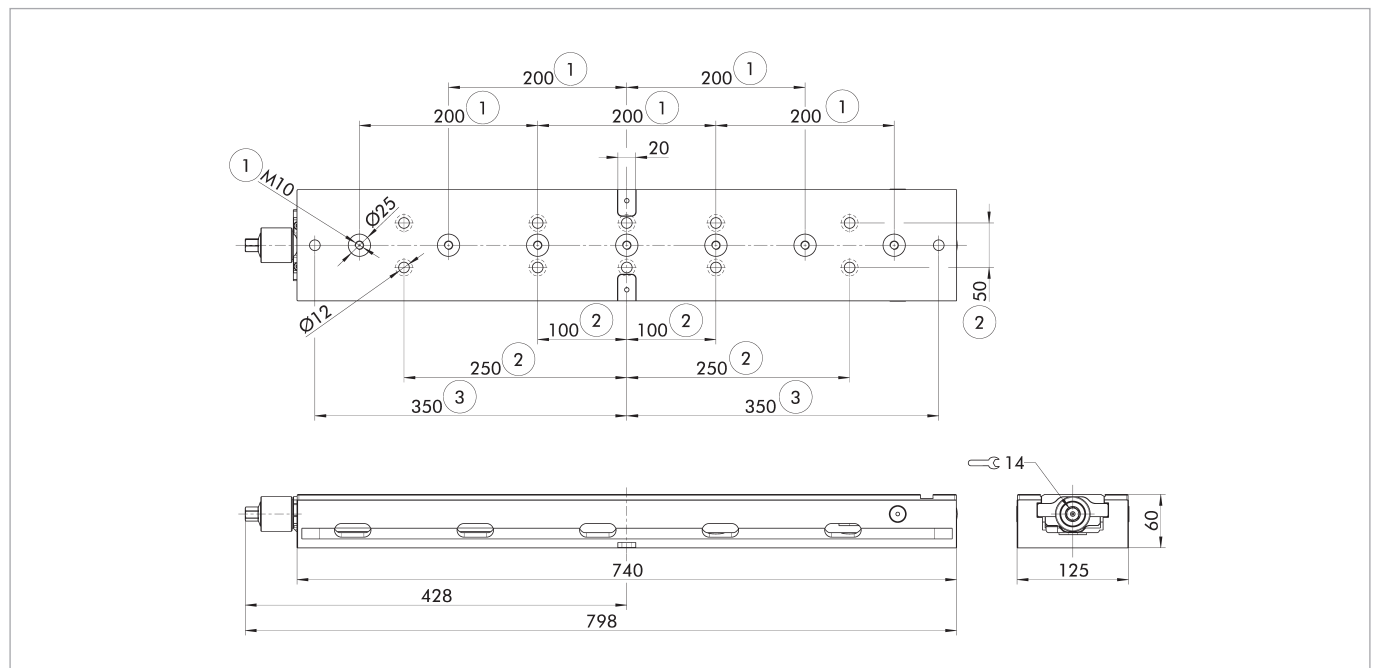
The clamping device and the system jaws have to be put together separately for this version.

**Use of VERO-S**

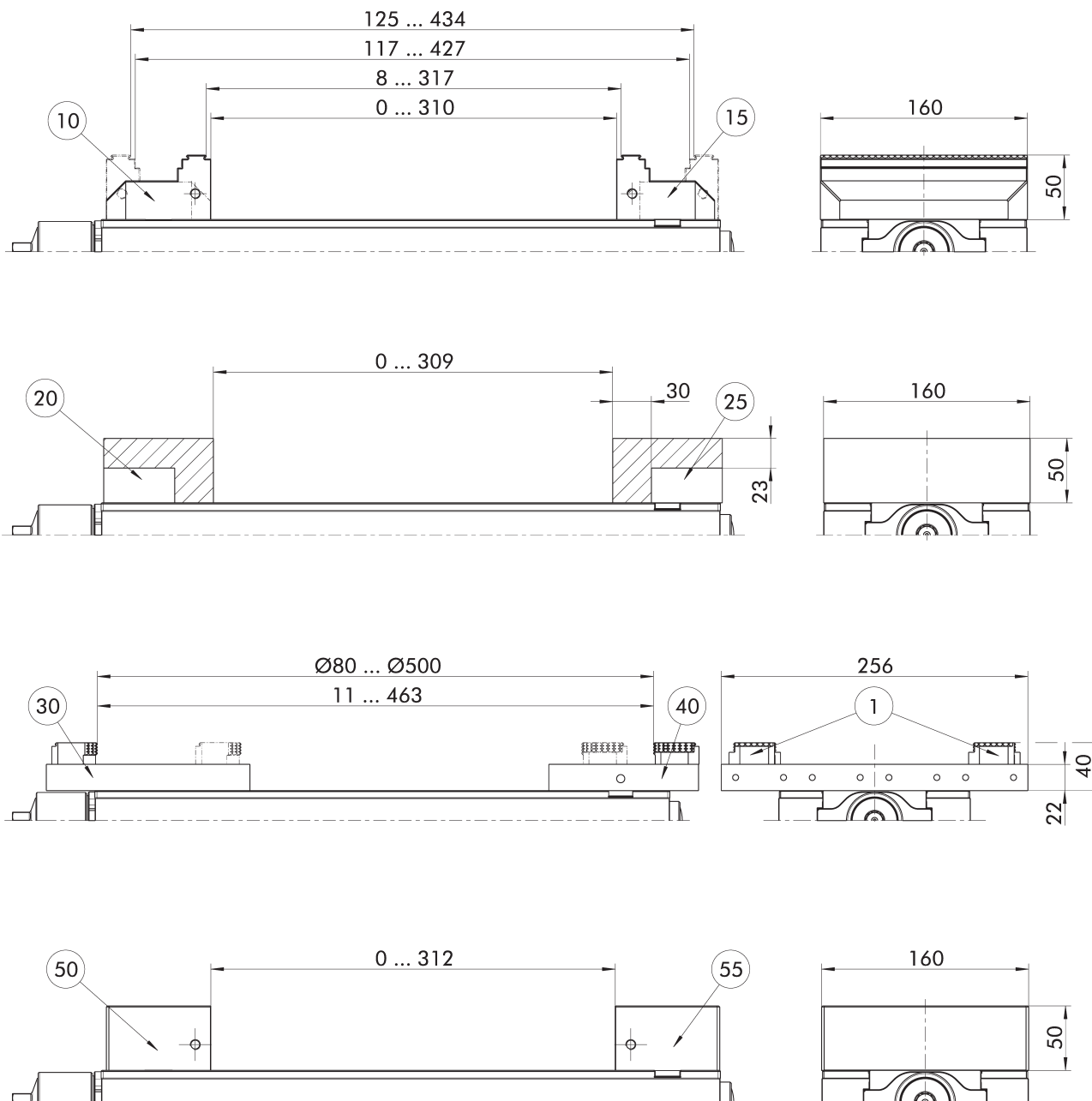
When using VERO-S, care must be taken to ensure that a shortened screw is used in the clamping pin (see accessories).

**Suitable system jaws**

Description	Item	Description	ID	Width [mm]	Depth [mm]	Height [mm]	Weight [kg]
Reversible grip jaw	10	SGWB-G3-B 125-66-40	0432490	125	66	40	1.8
Reversible grip jaw	15	SGWB-G3-F 125-66-40	0432489	125	66	40	1.8
Reversible grip jaw	20	SGWB-G3-B 65-57-33	1514380	65	57	33	0.9
Reversible grip jaw	25	SGWB-G3-F 65-57-30	1587366	65	57	30	0.9
Alu jaw	30	SGAL-B 125-68-40	0432469	125	68	40	1
Alu jaw	35	SGAL-F 125-68-40	0432492	125	68	40	1.1
Swivel plate	40	SGP-3 180-95-22	0432470	180	95	22	2.8
Adapter plate	50	SGA-4 180-62-22	0432493	180	62	22	1.9
Monoblock jaw	60	SGBB-B 125-66-40	1349858	125	66	40	2.6
Monoblock jaw	65	SGBB-F 125-66-40	1349857	125	66	40	2.6



- ① Prepared for NSE3 and GFD clamping pins
- ② Grid dimension prepared for screws M12 and fitting screws M12
- ③ Prepared for dowel pin set  $\varnothing$  12m6



Suitable system jaws with position number on the next page.  
Subject to technical changes.

- ① 6-way reversal jaw grip (ID 0430803), 6-way reversal jaw carbide grip (ID 1395550)

**Technical data**

Description	ID	Max. clamping force [kN]	Max. torque [Nm]	Weight [kg]
KSC-F 160-480	0432620	50	120	28.5

**Scope of delivery**

Vise, operating manual; without system jaws

**Notes**

**System jaws**

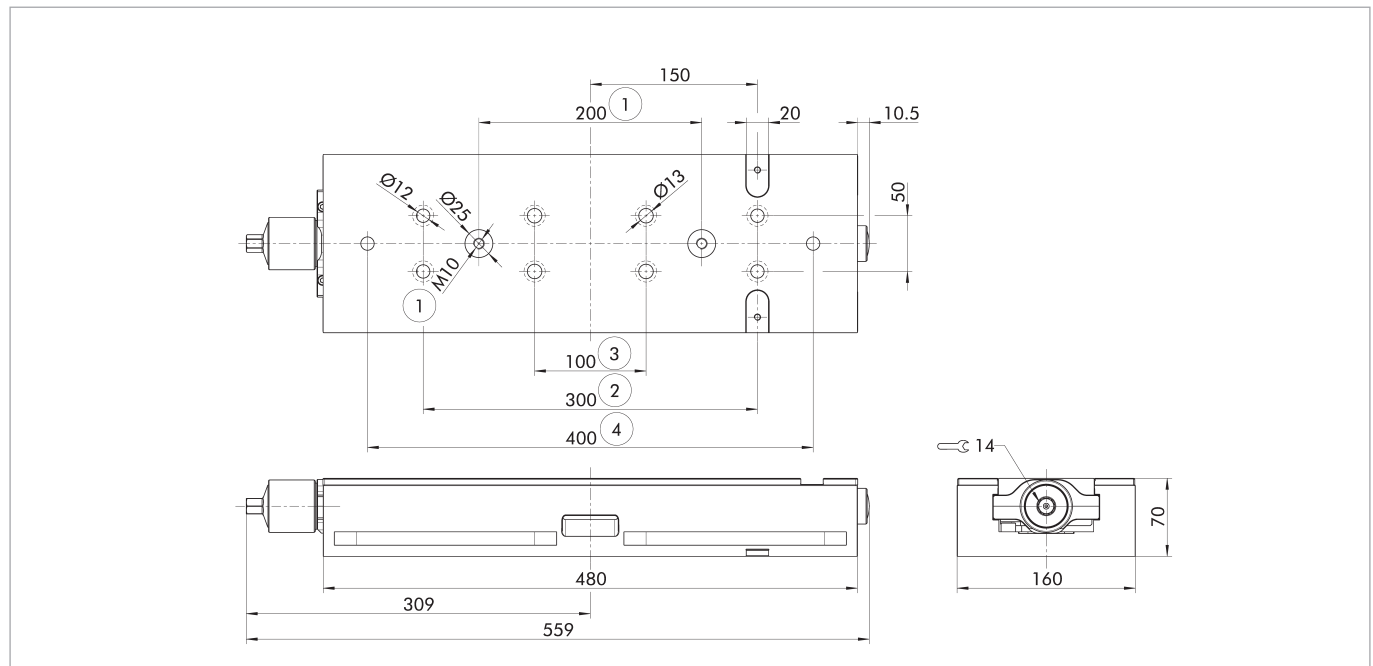
The clamping device and the system jaws have to be put together separately for this version.

**Use of VERO-S**

When using VERO-S, care must be taken to ensure that a shortened screw is used in the clamping pin (see accessories).

**Suitable system jaws**

Description	Item	Description	ID	Width [mm]	Depth [mm]	Height [mm]	Weight [kg]
Reversible grip jaw	10	SGWB-G3-B 160-81-50	0432614	160	81	50	3.4
Reversible grip jaw	15	SGWB-G3-F 160-81-50	0432624	160	81	50	3.2
Alu jaw	20	SGAL-B 160-85-50	0432623	160	85	50	2
Alu jaw	25	SGAL-F 160-85-50	0432625	160	85	50	2
Swivel plate	30	SGP-3 256-170-22	0432615	256	170	22	7.4
Adapter plate	40	SGA-4 256-125-22	0432621	256	125	22	5.4
Monoblock jaw	50	SGBB-B 160-81-50	1349865	160	81	50	4.8
Monoblock jaw	55	SGBB-F 160-81-50	1349864	160	81	50	4.8



- ① Prepared for NSE3 and GFD clamping pins
- ② Prepared for fitting screws M12
- ③ Grid dimension prepared for screws M12 and fitting screws M12
- ④ Prepared for dowel pin set Ø 12m6

## System jaws

### Reversible grip jaw

Design as movable jaw.  
With grip step 3 mm (up to 22 HRC) and a smooth clamping surface on both sides.



Suitable for	Description	Interface	ID
KSC-F 80-214	SGWB-G3-B 80-40.3-28	W-80-1	0432715
KSC-F 125-362			
KSC-F 125-740	SGWB-G3-B 125-57-33		0432474
KSC-F 125-362			
KSC-F 125-740	SGWB-G3-B 125-66-40	W-125-1	0432490
KSC-F 160-480	SGWB-G3-B 160-81-50	W-160	0432614

### Reversible grip jaw

Design as fixed jaw.  
With grip step 3 mm (up to 22 HRC) and a smooth clamping surface on both sides.



Suitable for	Description	Interface	ID
KSC-F 80-214	SGWB-G3-F 80-40.3-28	W-80-1	0432732
KSC-F 125-362			
KSC-F 125-740	SGWB-G3-F 125-57-33		1359848
KSC-F 125-362			
KSC-F 125-740	SGWB-G3-F 125-66-40	W-125-1	0432489
KSC-F 160-480	SGWB-G3-F 160-81-50	W-160	0432624

### Reversible carbide-grip jaw

Design as movable jaw.  
With carbide-grip step 3 mm (up to 58 HRC) and smooth clamping face on both sides.



Suitable for	Description	Interface	ID
KSC-F 80-214	SGWB-CG3-B 80-40-28		1514368
KSC-F 125-362			
KSC-F 125-740	SGWB-CG3-B 125-57-33		1514374
KSC-F 160-480	SGWB-CG3-B 160-81-50		1395527

### Reversible carbide-grip jaw

Design as fixed jaw.  
With carbide-grip step 3 mm (up to 58 HRC) and smooth clamping face on both sides.



Suitable for	Description	Interface	ID
KSC-F 80-214	SGWB-CG3-F 80-40-28		1467016
KSC-F 125-362			
KSC-F 125-740	SGWB-CG3-F 125-57-33		1590610
KSC-F 160-480	SGWB-CG3-F 160-81-50		1590611

### Reversible jaw with embossed profile

Design as movable jaw.  
With a special grip step on both sides for clamping pre-embossed workpieces simply and securely.



Suitable for	Description	Interface	ID
KSC-F 125-362			
KSC-F 125-740	SGWB-GL-B 125-57-33		1514378

### Reversible jaw with embossed profile

Design as fixed jaw.  
With a special grip step on both sides for clamping pre-embossed workpieces simply and securely.



Suitable for	Description	Interface	ID
KSC-F 125-362			
KSC-F 125-740	SGWB-GL-F 125-57-33		1627092

### Reversible jaw

Design as movable jaw.  
One side with grip step 3 mm (up to 22 HRC), one side height 40 mm with smooth clamping surface and threads for mounting top jaws.



Suitable for	Description	Interface	ID
KSC-F 125-362			
KSC-F 125-740	SGWB-G3-B 125-59-40	W-125-1	0430387

### Reversible jaw

Design as fixed jaw.  
One side with grip step 3 mm (up to 22 HRC), one side height 40 mm with smooth clamping surface and threads for mounting top jaws.



Suitable for	Description	Interface	ID
KSC-F 125-362			
KSC-F 125-740	SGWB-G3-F 125-59-40	W-125-1	1586742

### Reversible grip jaw

Design as movable jaw.  
Reduced jaw width.  
With grip step 3 mm (up to 22 HRC) and a smooth clamping surface on both sides.



Suitable for	Description	Interface	ID
KSC-F 80-214	SGWB-G3-B 40-40.3-28		1514379
KSC-F 125-362			
KSC-F 125-740	SGWB-G3-B 65-57-33		1514380

### Reversible grip jaw

Design as fixed jaw.  
Reduced jaw width.  
With grip step 3 mm (up to 22 HRC) and a smooth clamping surface on both sides.



Suitable for	Description	Interface	ID
KSC-F 80-214	SGWB-G3-F 40-40.5-28		1587365
KSC-F 125-362			
KSC-F 125-740	SGWB-G3-F 65-57-30		1587366

**Alu jaw**

Design as movable jaw.  
Used for rework at the customer site e.g. for incorporating contours or special shapes.



Suitable for	Description	Interface	ID
KSC-F 80-214	SGAL-B 80-48-28		0432718
KSC-F 125-362			
KSC-F 125-740	SGAL-B 125-68-40		0432469
KSC-F 160-480	SGAL-B 160-85-50		0432623

**Alu jaw**

Design as fixed jaw.  
Used for rework at the customer site e.g. for incorporating contours or special shapes.



Suitable for	Description	Interface	ID
KSC-F 80-214	SGAL-F 80-48-28		0432733
KSC-F 125-362			
KSC-F 125-740	SGAL-F 125-68-40		0432492
KSC-F 160-480	SGAL-F 160-85-50		0432625

**Steel jaw**

Design as movable jaw.  
Used for rework at the customer site e.g. for incorporating contours or special shapes.



Suitable for	Description	Interface	ID
KSC-F 80-214	SGS-B 80-48-28		1367467
KSC-F 125-362			
KSC-F 125-740	SGS-B 125-68-40		1452569

**Steel jaw**

Design as fixed jaw.  
Used for rework at the customer site e.g. for incorporating contours or special shapes.



Suitable for	Description	Interface	ID
KSC-F 80-214	SGS-F 80-48-28		1561216
KSC-F 125-362			
KSC-F 125-740	SGS-F 125-68-40		1559434

**Swivel plate**

Used – in combination with adapter plates and 6-way reversal jaws – to clamp bulky workpieces.



Suitable for	Description	Interface	ID
KSC-F 80-214	SGP-3 125-76-19	W-38	0432720
KSC-F 125-362			
KSC-F 125-740	SGP-3 180-95-22	W-38	0432470
KSC-F 160-480	SGP-3 256-170-22	W-38	0432615

**Adapter plate**

Used – in combination with swivel plates and 6-way reversal jaws – to clamp bulky workpieces.



Suitable for	Description	Interface	ID
KSC-F 80-214	SGA-4 125-48-19	W-38	0432735
KSC-F 125-362			
KSC-F 125-740	SGA-4 180-62-22	W-38	0432493
KSC-F 160-480	SGA-4 256-125-22	W-38	0432621

**Monoblock jaw**

Design as movable jaw.  
Jaw with a smooth clamping face for mounting top jaws.



Suitable for	Description	Interface	ID
KSC-F 80-214	SGBB-B 80-40-28	W-80-1	1349856
KSC-F 125-362			
KSC-F 125-740	SGBB-B 125-66-40	W-125-1	1349858
KSC-F 160-480	SGBB-B 160-81-50	W-160	1349865

**Monoblock jaw**

Design as fixed jaw.  
Jaw with a smooth clamping face for mounting top jaws.



Suitable for	Description	Interface	ID
KSC-F 80-214	SGBB-F 80-40-28	W-80-1	1349855
KSC-F 125-362			
KSC-F 125-740	SGBB-F 125-66-40	W-125-1	1349857
KSC-F 160-480	SGBB-F 160-81-50	W-160	1349864

**Reversal jaw smooth**

Design as movable jaw.  
Ground steps, for precise OP20 machining.



Suitable for	Description	Interface	ID
KSC-F 125-362			
KSC-F 125-740	SGWB-S8-B 125-57-33		1518691

**Reversal jaw smooth**

Design as fixed jaw.  
Ground steps, for precise OP20 machining.



Suitable for	Description	Interface	ID
KSC-F 125-362			
KSC-F 125-740	SGWB-S8-F 125-57-33		1518692

**5-axis jaw**

Design as movable jaw.  
One side with smooth clamping surface and threads for mounting top jaws.



Suitable for	Description	Interface	ID
KSC-F 125-362			
KSC-F 125-740	SG5A-B 125-44.5-33		1374778
KSC-F 125-362			
KSC-F 125-740	SG5A-B 125-45.5-40	W-125-1	0432472
KSC-F 160-480	SG5A-B 160-73-50	W-160	0432617

**5-axis jaw**

Design as fixed jaw.  
One side with smooth clamping surface and threads for mounting top jaws.



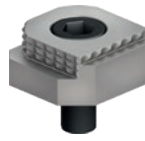
Suitable for	Description	Interface	ID
KSC-F 125-362			
KSC-F 125-740	SG5A-F 125-44.5-33		1374779
KSC-F 125-362			
KSC-F 125-740	SG5A-F 125-45.5-40	W-125-1	1551488
KSC-F 160-480	SG5A-F 160-73-50	W-160	1619854



## Top jaws

### 6-way reversal jaws

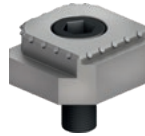
With five grip steps as well as a coated clamping face.



Description	Width mm	Height mm	Depth mm	Interface	ID
GBG-6W 38-38-18	38.5	18	38.2	W-38	0430803

### 6-way reversal jaws

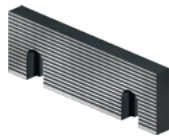
With five carbide grip steps as well as a smooth clamping face.



Description	Width mm	Height mm	Depth mm	Interface	ID
GBCG-6W 38-38-18	38.5	18	38.2	W-38	1395550

### Jaw profiled

For increasing the friction between jaw and workpiece without clamping impressions.



Description	Width mm	Height mm	Depth mm	Interface	ID
GBD 125-40-11.5	125	40	11.5	W-125-1	1373349
GBD 160-50-13.5	160	50	13.5	W-160	1373350

### Serrated jaw

For increasing the friction between jaw and workpiece with minimal clamping impressions.



Description	Width mm	Height mm	Depth mm	Interface	ID
GBC 125-40-12.5	125	40	12.5	W-125-1	1373268
GBC 160-50-14.4	160	50	14.4	W-160	1373269

### Ground jaw

With a completely ground clamping face.



Description	Width mm	Height mm	Depth mm	Interface	ID
GBP 125-40-11.5	125	40	11.5	W-125-1	1373278
GBP 160-50-13.5	160	50	13.5	W-160	1373281

### Soft jaw

Hardenable jaws for rework at the customer site, e.g. for incorporating contours or special shapes.



Description	Width mm	Height mm	Depth mm	Interface	ID
GBW 125-40-20	125	40	20	W-125-1	1373288
GBW 160-50-20	160	50	20	W-160	1373289

### Stepped jaw

With ground step, 8 mm.



Description	Width mm	Height mm	Depth mm	Interface	ID
GBS 125-40-11.5-8	125	40	11.5	W-125-1	1373327
GBS 160-50-13.5-8	160	50	13.5	W-160	1373328

### Stepped jaw

With ground step, 17 mm.



Description	Width mm	Height mm	Depth mm	Interface	ID
GBS 125-40-11.5-17	125	40	11.5	W-125-1	0430413

### Stepped jaw

With coated step, 5 mm.



Description	Width mm	Height mm	Depth mm	Interface	ID
GBS-W 80-28-10-5	80	28	10	W-80-1	1395509
GBS-W 125-40-11.5-5	125	40	11.5	W-125-1	0430414
GBS-W 160-50-13.5-5	160	50	13.5	W-160	1395511

### Stepped jaw

With grip step 3 mm and ground step 18 mm.



Description	Width mm	Height mm	Depth mm	Interface	ID
GBS-G3					
125-40-21.5-18	125	40	21.5	W-125-1	0430415
GBS-G3 125-40-24-18	125	40	24	W-125-1	1322989

### Stepped jaw

With special "soft" grip step, 5 mm. For embossed clamping of soft materials such as plastic or aluminum.



Description	Width mm	Height mm	Depth mm	Interface	ID
GBS-SG5 125-40-11.5	125	40	11.5	W-125-1	1393552

**Stepped jaw**

With grip step, 3 mm.  
For embossed clamping of unhardened materials up to 22 HRC.



Description	Width mm	Height mm	Depth mm	Interface	ID
GBS-G3 80-28-10	80	28	10	W-80-1	1326805
GBS-G3 125-40-11.5	125	40	11.5	W-125-1	1373331
GBS-G3 160-50-13.5	160	50	13.5	W-160	1373332

**Stepped jaw**

With grip step, 5 mm.  
For embossed clamping of unhardened materials up to 22 HRC.



Description	Width mm	Height mm	Depth mm	Interface	ID
GBS-G5 125-40-11.5	125	40	11.5	W-125-1	1373334
GBS-G5 160-50-13.5	160	50	13.5	W-160	1373335

**Stepped jaw**

With grip step, 8 mm.  
For embossed clamping of unhardened materials up to 22 HRC.



Description	Width mm	Height mm	Depth mm	Interface	ID
GBS-G8 125-40-11.5	125	40	11.5	W-125-1	1373338
GBS-G8 160-50-13.5	160	50	13.5	W-160	1373340

**Stepped jaw**

With carbide grip step, 3 mm.  
For embossed clamping of hardened materials up to 58 HRC.



Description	Width mm	Height mm	Depth mm	Interface	ID
GBS-CG3 125-40-11.5	125	40	11.5	W-125-1	1395524
GBS-CG3 160-50-13.5	160	50	13.5	W-160	1431232

**Stepped jaw**

With carbide grip step, 5 mm.  
For embossed clamping of hardened materials up to 58 HRC.



Description	Width mm	Height mm	Depth mm	Interface	ID
GBS-CG5 125-40-11.5	125	40	11.5	W-125-1	1424000
GBS-CG5 160-50-15.5	160	50	15.5	W-160	1431233

**Stepped jaw**

With special grip step, 3 mm.  
For clamping pre-embossed materials and workpieces.



Description	Width mm	Height mm	Depth mm	Interface	ID
GBS-GL3 125-40-11.5	125	40	11.5	W-125-1	1395577

**Stepped jaw with T-slot**

With grip step, 3 mm.  
T-slot for mounting the positioning strip.



Description	Width mm	Height mm	Depth mm	Interface	ID
GBS-G3-T 125-40-17.5	125	40	17.5	W-125-1	0430248

**Stepped jaw with T-slot**

With grip step, 5 mm.  
T-slot for mounting the positioning strip.



Description	Width mm	Height mm	Depth mm	Interface	ID
GBS-G5-T 125-40-17.5	125	40	17.5	W-125-1	0430247
GBS-G5-T 160-50-20	160	50	20	W-160	0430250

**Stepped jaw with T-slot**

With grip step, 8 mm.  
T-slot for mounting the positioning strip.



Description	Width mm	Height mm	Depth mm	Interface	ID
GBS-G8-T 125-40-17.5	125	40	17.5	W-125-1	0430237
GBS-G8-T 160-50-20	160	50	20	W-160	0430249

**Positioning bar**

To suit all stepped jaws with T-slot.



Description	Width mm	Height mm	Depth mm	Interface	ID
GPL 125-32-13.5	125	32	13.5	W-125-1	0430238
GPL 160-32-13.5	160	32	13.5	W-160	0430251

**Grip jaw**

For embossed clamping of unhardened materials up to 22 HRC.



Description	Width mm	Height mm	Depth mm	Interface	ID
GBG 125-40-11.5	125	40	11.5	W-125-1	1373284
GBG 160-50-13.5	160	50	13.5	W-160	1373285

**Chuck jaw with locating pins**

Retractable locating pins for quickly adjusting the jaw to the respective workpiece.



Description	Width mm	Height mm	Depth mm	Interface	ID
GPS 125-40-17	125	40	16.7	W-125-1	1509316

**Prism jaw, ground**

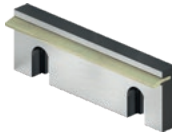
For precise clamping of round workpieces.  
 100 =  $\varnothing 11 - \varnothing 41$  mm.  
 125 =  $\varnothing 14 - \varnothing 48$  mm.  
 160 =  $\varnothing 16 - \varnothing 60$  mm.



Description	Width mm	Height mm	Depth mm	Interface	ID
GVA 125-40-17.5	125	40	17.5	W-125-1	1373344
GVA 160-50-19.5	160	50	19.5	W-160	1373345

**Spring leaf pull-down jaw**

For an active jaw pull-down function with a light clamping impression on the workpiece for more precise machining results.



Description	Width mm	Height mm	Depth mm	Interface	ID
GFA 125-40-11.5	125	40	11.5	W-125-1	1373304
GFA 160-50-13.5	160	50	13.5	W-160	1373306

**Spring plate pull-down jaw**

For an active jaw pull-down function without clamping impressions on the workpiece for more precise machining results.



Description	Width mm	Height mm	Depth mm	Interface	ID
GFB 80-24-9	80	24.3	9	W-80-1	0432736
GFB 125-35-10	125	35	10	W-125-1	0432498
GFB 125-39-10	125	39	10	W-125-1	0430192
GFB 160-45-12	160	45	12	W-160	0432629
GFB 160-49-12	160	49	12	W-160	0430266

**Precision pull-down jaw**

For an active jaw pull-down function without clamping impressions on the workpiece for more precise machining results.



Description	Width mm	Height mm	Depth mm	Interface	ID
GBN-P 125-40-25	125	40	25	W-125-1	0430147
GBN-P 160-50-27.5	160	50	27.5	W-160	0430148

**Universal stepped jaw**

Versatile stepped jaw with ground step.



Description	Width mm	Height mm	Depth mm	Interface	ID
GPE 80-28-10-5	80	28	10	W-80-1	0432721

## Accessories

### Clamping force tester

For measuring the jaw clamping force of stationary clamping devices.



Suitable for	Description	ID
KSC-F 80-214 KSC-F 125-362 KSC-F 125-740 KSC-F 160-480	IFT SST Set	1475766

### Standard clamping pins

Clamping pin for positive connection with NSE3 clamping modules. With shortened fastening screw.



Suitable for	Description	ID
KSC-F 80-214 KSC-F 125-362 KSC-F 125-740 KSC-F 160-480	SPA 40-K	0432369
KSC-F 125-362 KSC-F 125-740 KSC-F 160-480	SPB 40-K	0432370

### Indexing pin

Used as an anti-rotation protection for VERO-S modules with anti-rotation protection V1.



Suitable for	Description	ID
KSC-F 80-214	IXB V1-K	0432371

### Clamping pin GFD-SP

Clamping pin for positive connection with GFD set-up stations.



Suitable for	Description	ID
KSC-F 80-214 KSC-F 125-362 KSC-F 125-740 KSC-F 160-480	GFD-SP 40	0433600

### Indexing pin GFD

Indexing pins for position orientation of clamping pallets and clamping devices on GFD set-up stations.



Suitable for	Description	ID
KSC-F 80-214	GFD-IXB	1367937

### Torque wrench 10 – 100 Nm

Serves for applying a defined torque. With 1/2" square drive



Suitable for	Description	ID
KSC-F 80-214 KSC-F 125-362 KSC-F 125-740	GSH-D 10-100	0432477

### Torque wrench 20 – 200 Nm

Serves for applying a defined torque. With 1/2" square drive



Suitable for	Description	ID
KSC-F 160-480	GSH-D 20-200	0432487

### Actuating lever, articulated

For convenient clamping range presetting. With 1/2" square drive



Suitable for	Description	ID
KSC-F 80-214 KSC-F 125-362 KSC-F 125-740 KSC-F 160-480	GSH-G 1/2"	0432478

### Hexagonal insert SW 12

Suitable for square drive 1/2".



Suitable for	Description	ID
KSC-F 80-214	GSK-I SW12-1/2"	0432479

### Hexagonal insert SW 14

Suitable for square drive 1/2".



Suitable for	Description	ID
KSC-F 125-362 KSC-F 125-740 KSC-F 160-480	GSK-I SW14-1/2"	0432619

**Workpiece stop**

For reversal jaw grip, width 40 mm.  
For reversal jaw grip, width 65 mm.  
For 5-axis jaw, width 65 mm.



Suitable for	Description	ID
KSC-F 80-214 KSC-F 125-362 KSC-F 125-740	GWSA-1 M6	0432354

**Workpiece stop**

For connecting thread M8.



Suitable for	Description	ID
KSC-F 80-214 KSC-F 125-362 KSC-F 125-740 KSC-F 160-480	GWSA-2 M8	0430710

**Workpiece stop**

For connecting thread M8/M10.



Suitable for	Description	ID
KSC-F 80-214 KSC-F 125-362 KSC-F 125-740 KSC-F 160-480	GWSA-3 M8/M10	0430021

**Magnetic workpiece stop, small**

For quick and easy attachment to system jaws or vises.



Suitable for	Description	ID
KSC-F 80-214 KSC-F 125-362 KSC-F 125-740 KSC-F 160-480	GWSA-M 60 x 15	1391293

**Magnetic workpiece stop, large**

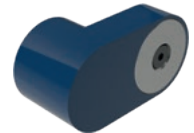
For quick and easy attachment to system jaws or vises.



Suitable for	Description	ID
KSC-F 80-214 KSC-F 125-362 KSC-F 125-740 KSC-F 160-480	GWSA-M 115 x 15	1391331

**Extensions**

As an accessory for the magnetic workpiece stops.



Suitable for	Description	ID
KSC-F 80-214 KSC-F 125-362 KSC-F 125-740 KSC-F 160-480	GWSA-V ø68 x 30	1394477

**Clamping screws for clamping claws**

Used in combination with clamping claws for fastening clamping devices.



Suitable for	Description	T-slot	ID
KSC-F 80-214 KSC-F 125-362 KSC-F 125-740 KSC-F 160-480	GSC-S M10-T12	12 mm/M10	0432043
KSC-F 80-214 KSC-F 125-362 KSC-F 125-740 KSC-F 160-480	GSC-S M12-T14	14 mm/M12	0432044
KSC-F 80-214 KSC-F 125-362 KSC-F 125-740 KSC-F 160-480	GSC-S M14-T16	16 mm/M14	0432045
KSC-F 80-214 KSC-F 125-362 KSC-F 125-740 KSC-F 160-480	GSC-S M16-T18	18 mm/M16	0432046
KSC-F 80-214 KSC-F 125-362 KSC-F 125-740 KSC-F 160-480	GSC-S M16-T20	20 mm/M16	1550423
KSC-F 80-214 KSC-F 125-362 KSC-F 125-740 KSC-F 160-480	GSC-S M16-T22	22 mm/M16	1550424

**Clamping screws for base body**  
Used for directly attaching clamping devices via the base body.



Suitable for	Description	T-slot	ID
KSC-F 80-214 KSC-F 125-362 KSC-F 125-740 KSC-F 160-480	GSC-G-1 M10-T12	12 mm/M10	0430422
KSC-F 80-214 KSC-F 125-362 KSC-F 125-740 KSC-F 160-480	GSC-G-1 M12-T14	14 mm/M12	0430423
KSC-F 80-214 KSC-F 125-362 KSC-F 125-740 KSC-F 160-480	GSC-G-1 M12-T16	16 mm/M12	0430424
KSC-F 80-214 KSC-F 125-362 KSC-F 125-740 KSC-F 160-480	GSC-G-1 M12-T18	18 mm/M12	0430425

**Fitting screws**  
For precise position orientation and mounting of manual clamping vises on the machine table.



Suitable for	Description	ID
KSC-F 125-362 KSC-F 125-740 KSC-F 160-480	GPSC-1 Ø12f7-M12 GPSC-2 Ø12f7-M12	0432047 0490546

**Precision T-nuts**  
Suitable for all conventional T-groove widths of machine tables.



Suitable for	Description	T-slot	ID
KSC-F 80-214 KSC-F 125-362 KSC-F 125-740 KSC-F 160-480	GPN M6-T12	12 mm/M6	0490590
KSC-F 80-214 KSC-F 125-362 KSC-F 125-740 KSC-F 160-480	GPN M6-T14	14 mm/M6	0490547
KSC-F 80-214 KSC-F 125-362 KSC-F 125-740 KSC-F 160-480	GPN M6-T16	16 mm/M6	0490548
KSC-F 80-214 KSC-F 125-362 KSC-F 125-740 KSC-F 160-480	GPN M6-T18	18 mm/M6	0490587
KSC-F 80-214 KSC-F 125-362 KSC-F 125-740 KSC-F 160-480	GPN M6-T20	20 mm/M6	1359734
KSC-F 80-214 KSC-F 125-362 KSC-F 125-740 KSC-F 160-480	GPN M6-T22	22 mm/M6	0490621

**Alignment and centering set**  
For quick and easy alignment and fastening on T-slot tables.



Suitable for	Description	T-slot	ID
KSC-F 80-214 KSC-F 80-214 KSC-F 80-214 KSC-F 80-214	GAZ-1 T12 GAZ-1 T14 GAZ-1 T16 GAZ-1 T18	12 mm 14 mm 16 mm 18 mm	1326851 1326852 1326853 1326854

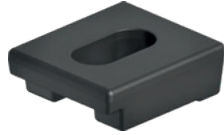
**Cylinder pin set**  
For easier assembly of the clamping device on the machine table.



Suitable for	Description	ID
KSC-F 80-214 KSC-F 125-362 KSC-F 125-740 KSC-F 160-480	GZS Ø12m6	1373755

**Clamping claws**

For quick and easy mounting of SCHUNK clamping devices.



Suitable for	Description	ID
KSC-F 80-214		
KSC-F 125-362		
KSC-F 125-740		
KSC-F 160-480	GSPR-A 50-57	0490604

**Workpiece Supports Set**

**Set of workpiece supports – width 80 mm**

Suitable for system jaws H = 28 mm with grip level 3 mm.  
Heights = 5, 10, 15, 20, and 22 mm.



Suitable for	Description	ID
KSC-F 80-214	GWU-S grip 80-28	1394225

**Set of workpiece supports – width 160 mm**

Suitable for system jaws H = 50 mm.  
Heights = 15, 30, 40, 45, and 47 mm.



Suitable for	Description	ID
KSC-F 160-480	GWU-S 160-50	1394231

**Set of workpiece supports – width 125 mm**

Suitable for system jaws H = 40 mm with grip level 3 mm.  
Heights = 9, 22, 27, 32, and 34 mm.



Suitable for	Description	ID
KSC-F 125-362		
KSC-F 125-740	GWU-S grip 125-40	1394229

## Workpiece supports

### Workpiece supports – width 80 mm

In different heights.  
1 Set = 2 pieces



Suitable for	Description	Height mm	ID
KSC-F 80-214	GWU-M 80-5	5	1465960
KSC-F 80-214	GWU-M 80-10	10	1465956
KSC-F 80-214	GWU-M 80-15	15	1460327
KSC-F 80-214	GWU-M 80-20	20	1411113
KSC-F 80-214	GWU-M 80-22	22	1411114

### Workpiece supports – width 125 mm

In different heights.  
1 Set = 2 pieces



Suitable for	Description	Height mm	ID
KSC-F 125-362			
KSC-F 125-740	GWU-M 125-8	8	1450266
KSC-F 125-362			
KSC-F 125-740	GWU-M 125-9	9	1462567
KSC-F 125-362			
KSC-F 125-740	GWU-M 125-10	10	1411328
KSC-F 125-362			
KSC-F 125-740	GWU-M 125-12	12	1447369
KSC-F 125-362			
KSC-F 125-740	GWU-M 125-15	15	1411350
KSC-F 125-362			
KSC-F 125-740	GWU-M 125-20	20	1452308
KSC-F 125-362			
KSC-F 125-740	GWU-M 125-22	22	1457551
KSC-F 125-362			
KSC-F 125-740	GWU-M 125-23	23	1411380
KSC-F 125-362			
KSC-F 125-740	GWU-M 125-25	25	1484475
KSC-F 125-362			
KSC-F 125-740	GWU-M 125-27	27	1461008
KSC-F 125-362			
KSC-F 125-740	GWU-M 125-30	30	1411387
KSC-F 125-362			
KSC-F 125-740	GWU-M 125-31	31	1484477
KSC-F 125-362			
KSC-F 125-740	GWU-M 125-32	32	1411398
KSC-F 125-362			
KSC-F 125-740	GWU-M 125-33	33	1484478
KSC-F 125-362			
KSC-F 125-740	GWU-M 125-34	34	1484480
KSC-F 125-362			
KSC-F 125-740	GWU-M 125-35	35	1411391
KSC-F 125-362			
KSC-F 125-740	GWU-M 125-36	36	1429618
KSC-F 125-362			
KSC-F 125-740	GWU-M 125-37	37	1411395
KSC-F 125-362			
KSC-F 125-740	GWU-M 125-38	38	1429615

### Workpiece supports – width 160 mm

In different heights.  
1 Set = 2 pieces



Suitable for	Description	Height mm	ID
KSC-F 160-480	GWU-M 160-15	15	1464957
KSC-F 160-480	GWU-M 160-22	22	1461402
KSC-F 160-480	GWU-M 160-30	30	1538303
KSC-F 160-480	GWU-M 160-37	37	1443672
KSC-F 160-480	GWU-M 160-40	40	1504993
KSC-F 160-480	GWU-M 160-41	41	1597020
KSC-F 160-480	GWU-M 160-42	42	1410170
KSC-F 160-480	GWU-M 160-43	43	1534944
KSC-F 160-480	GWU-M 160-44	44	1484499
KSC-F 160-480	GWU-M 160-45	45	1410169
KSC-F 160-480	GWU-M 160-46	46	1497132
KSC-F 160-480	GWU-M 160-47	47	1410166







**H.-D. SCHUNK GmbH & Co.  
Spanntechnik KG**

Lothringer Str. 23  
D-88512 Mengen  
Tel. +49-7572-7614-1300  
Fax +49-7572-7614-1039  
CMM@de.schunk.com  
schunk.com